



TA80V

Smart Vet Ventilator + Anesthesia Machine



Electrical control turbine drive, no air source required to drive ventilator



9 inch HD Touch Screen displays real-time parameters



Safely provides anesthesia specific for small/companion animals



Mix O2 and air for patient animal, more safe for patient animal during the surgical



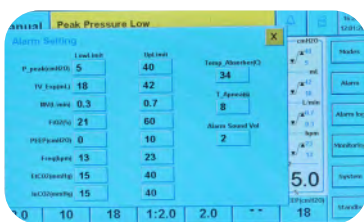
Circuit Heating Function, give animal warm gas and evaporates water inside to protect components

Integrated oxygen compressor, ventilator, anesthesia and monitor, to make surgery operation easier

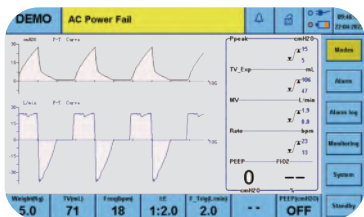
- Multiple breathing modes: VCV, PCV SPONT, Manual and Demo
- With intelligent spontaneous mode to avoid breathing confrontation
- Parameters calculated automatically by only setting weight
- With FiO2 monitoring
- With apnea alarm and time adjustable
- 2 power sockets on back for connecting monitor, oxygen generator or infusion pump
- Veterinary double oxygen flow meters
- Double bellows with 0-300ml/1500ml capacity



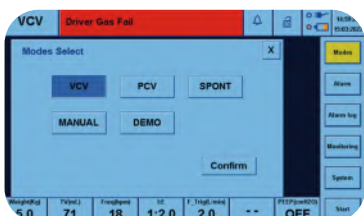
2 power supply sockets for connecting monitor, ventilator or infusion pump etc



Alarm events: PEEP, TV, FiO2, EtCO2, Freq, Temp, apnea etc alarm limit setting



Flow & pressure & capacity waveform, and pressure & flow ring, capacity ring etc can be monitored.



VCV, PCV, SPONT, Manual and Demo breathing modes.



With heating module, gives warm gas to animals



With FiO2 sensor and CO2 monitor

Ventilator

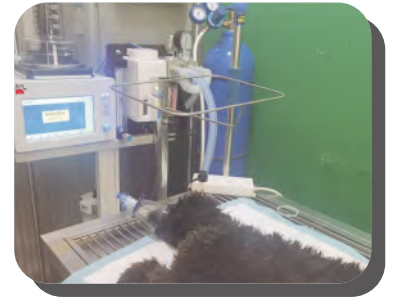
- Drive Mode: electric control
- Tidal volume: 3-1600ml(mechanical control)
5-1600ml(manual control)
- Frequency: 1-100bpm
- I:E: 9.9:1 to 1:9.9
- PEEP:OFF 3-20cmH20
- Oxygen Flow Meter Range: 0-1/1-10L/min(double tubes)
- Air Flow Meter: 0-10L/min

Vaporizer

- Concentration Rang: Isoflurane/Enflurane 0.2-5%
Sevoflurane: 0.2-8%
- Flow rate range: 0.2 to 15L/min



- Selectatec vaporizer, easy to assemble
- Independent ACGO switch, one-step switching
- CO2 absorber canister with 1000ml capacity, to reduce the dead space



Pet hospital



Scientific Research



Animal laboratory



Training Institution



Tootoo Meditech Co., Ltd.

Address:

3A, Phase II, Smart Home, Baolong Street,
Longgang District, Shenzhen, Guangdong, China

Tel:

+86-755-28306385

Whatsapp:

+86 136 3258 4549

Email:

info@newtootoo.com

Web:

www.newtootoo.com